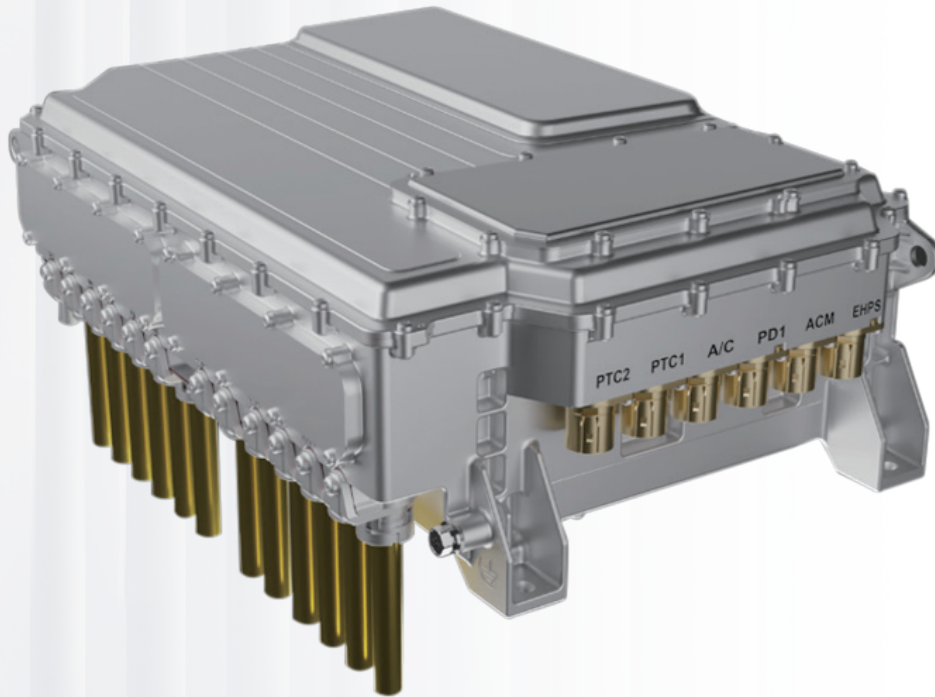


6-in-1 Controller

High Power System Dedicated Controller



特百佳动力
— TOP GEAR —



- **High integration:** including main drive 1, main drive 2, oil pump, air pump, DC/DC、PDU, structural integration, hardware integration, chip integration, cost saving, and improved control efficiency;
- **High efficiency:** Applying high-efficiency power modules (optional third-generation semiconductor SiC modules) and combining them with unique control algorithms, the electrical control losses of the motor are minimized, improving economic efficiency;
- **Advanced algorithm:** deep matching calibration and verification with gearbox and motor, reducing on-site debugging time;
- **Deep compatibility:** The dual MCU module can be flexibly matched according to the power of the load motor, and can achieve a maximum output of 600kW;
- **High safety:** High voltage insulation detection, short circuit, open circuit, overcurrent, overvoltage, undervoltage, overheating, stall and other protection mechanisms.

Top Gear Powertrain Technology Co.,Ltd

Building 2, No. 8158 Tingwei Highway, Jinshan Industrial Zone, Shanghai, China

Learn more at
<http://en.shtopgear.com>